

\$SPX - Daily

SWING	3 DAY	2 DAY
Trend	UP	UP
HIGH	1355,87	1355,87
38,261,8	1348,80	1350,13
BP	1346,61	1348,35
61,808,2	1344,42	1346,57
LOW	1337,35	1340,83
Range	18,52	15,04

Geometry: Next Target:

BcD :	1,472	1,618: 1375,48
Alt :	0,905	1,000: 1376,55
Rx :	2,098	2,236: 1374,40
Dx :	1,326	
XcD :		
XaD :	0,950	1,000: 1370,58
Alt2 :	N/A	
1:1 is at 1376,55		

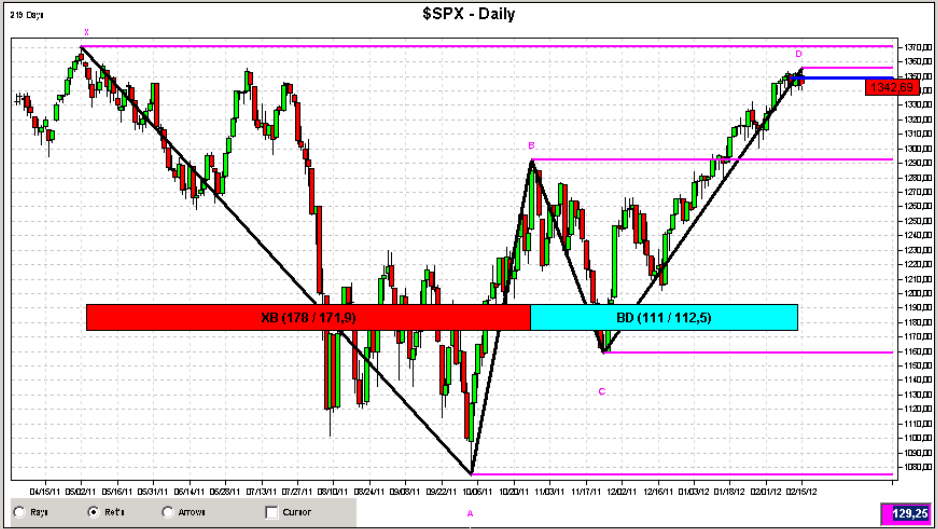
1:1's Down	1:1's Up
1291,48 :84,69	1376,55 :217,89
1221,87 :134,00	
1060,06 :295,81	

Auto Retracements

518 : 1182,14	500 : 1257,26
380 : 1215,32	382 : 1280,54
382 : 1248,50	618 : 1261,00
518 : 1233,99	500 : 1279,12

Date	High	Low	Last	Change	Range
Feb 10	1351,21	1337,35	1342,64	-9,31	13,86
Feb 13	1353,35	1343,06	1351,77	9,13	10,29
Feb 14	1351,30	1340,83	1350,50	-1,27	10,47
Feb 15	1355,87	1341,10	1342,69	-7,81	14,77

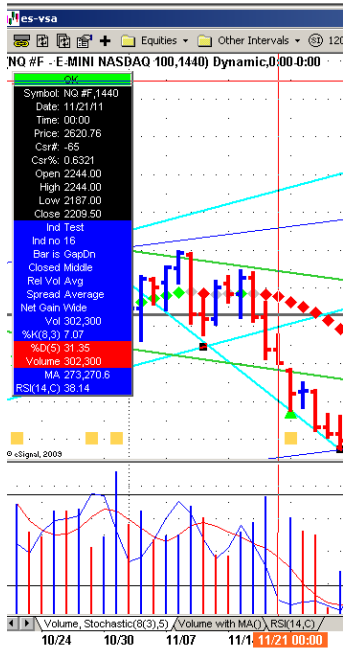
Trend Waves	Average Daily Ranges
FAST	3 Day : 11,54
MEDIUM	5 Day : 10,67
SLOW	10 Day : 11,83



Pivot	Date	Swing	Days	Deqr.
D=	1355,87	15 Fe 2012	197,21	82, 83,3
C=	1158,66	25 No 2011	-134,00	29, 29,1
B=	1292,66	27 Oc 2011	217,89	23, 22,8
A=	1074,77	4 Oc 2011	-295,81	155, 149,2
X=	1370,58	2 Ma 2011		

Time	Days	DEG
BcD:	2,828	2,861
AcD:	1,577	1,605
XcD:	0,396	0,414
CYC:	3,111	0,654
ALT:	3,565	3,657

RSI	Stochastic	DMI
63,42	82,37	ADX: 46,29
DOWN	DOWN	+DI: 27,49
Neutral	Neutral	-DI: 10,78
		LONG



SOW 58 TRAP UPMOVE

Note: This indicator is based upon the action of two bars.

Bar Description:

The first bar is up and closing off the highs. The next bar is a wide spread down bar closing near the lows with its high higher than the first bar. This is designed to lock traders who are long into poor positions.

Background:

Pay particular attention to the background. After a period of rising prices this could be the start of distribution by one or more professional groups.

However if the market has already fallen for some time this could be the start of a shakeout especially if the news is bad.

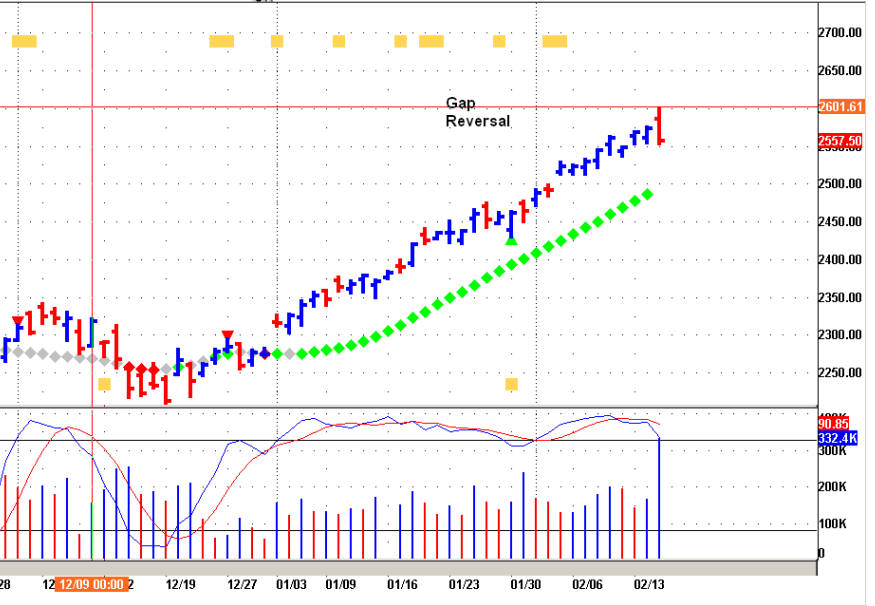
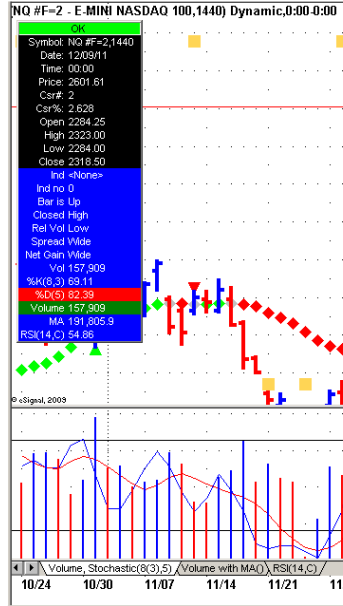
If there are other SOW in the near background this adds to the weakness.

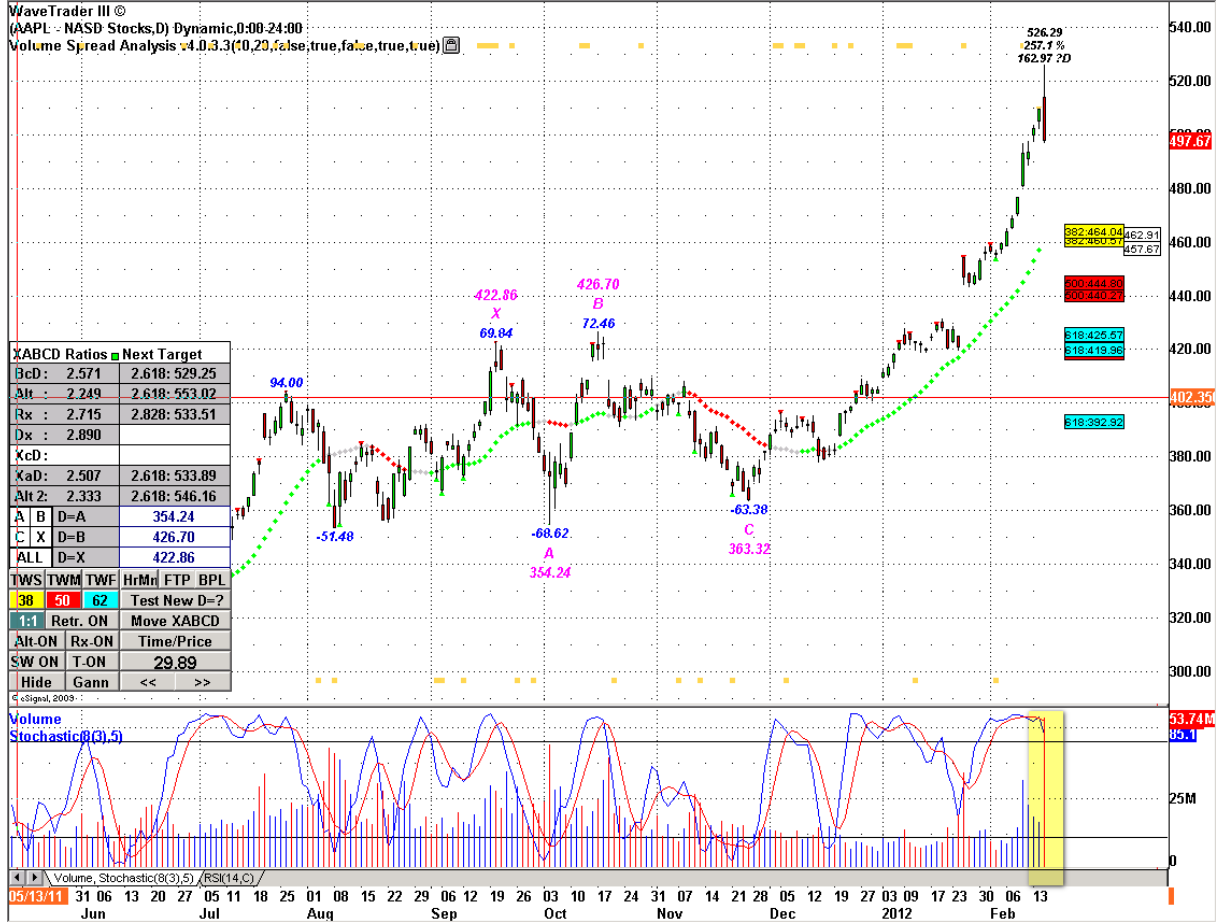
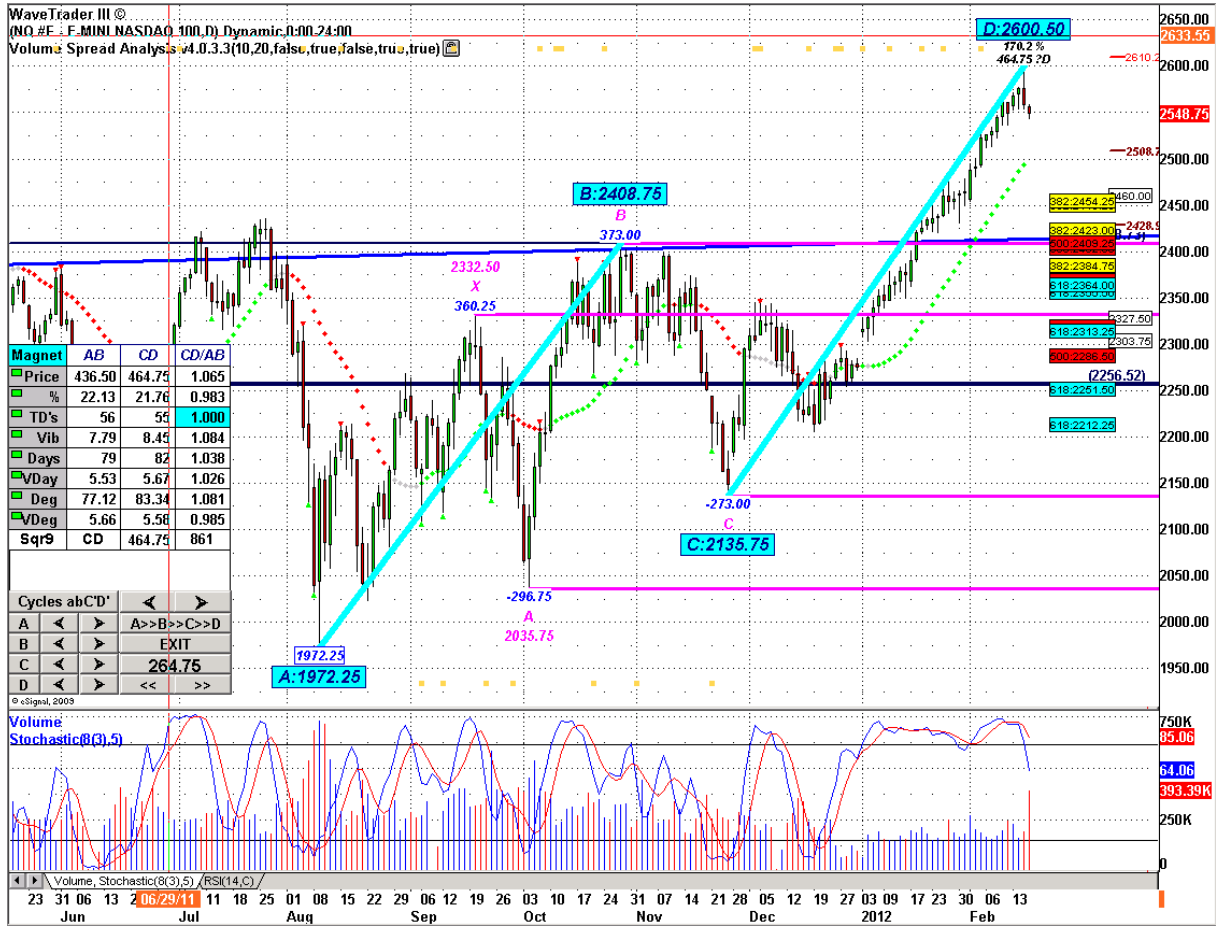
Future:

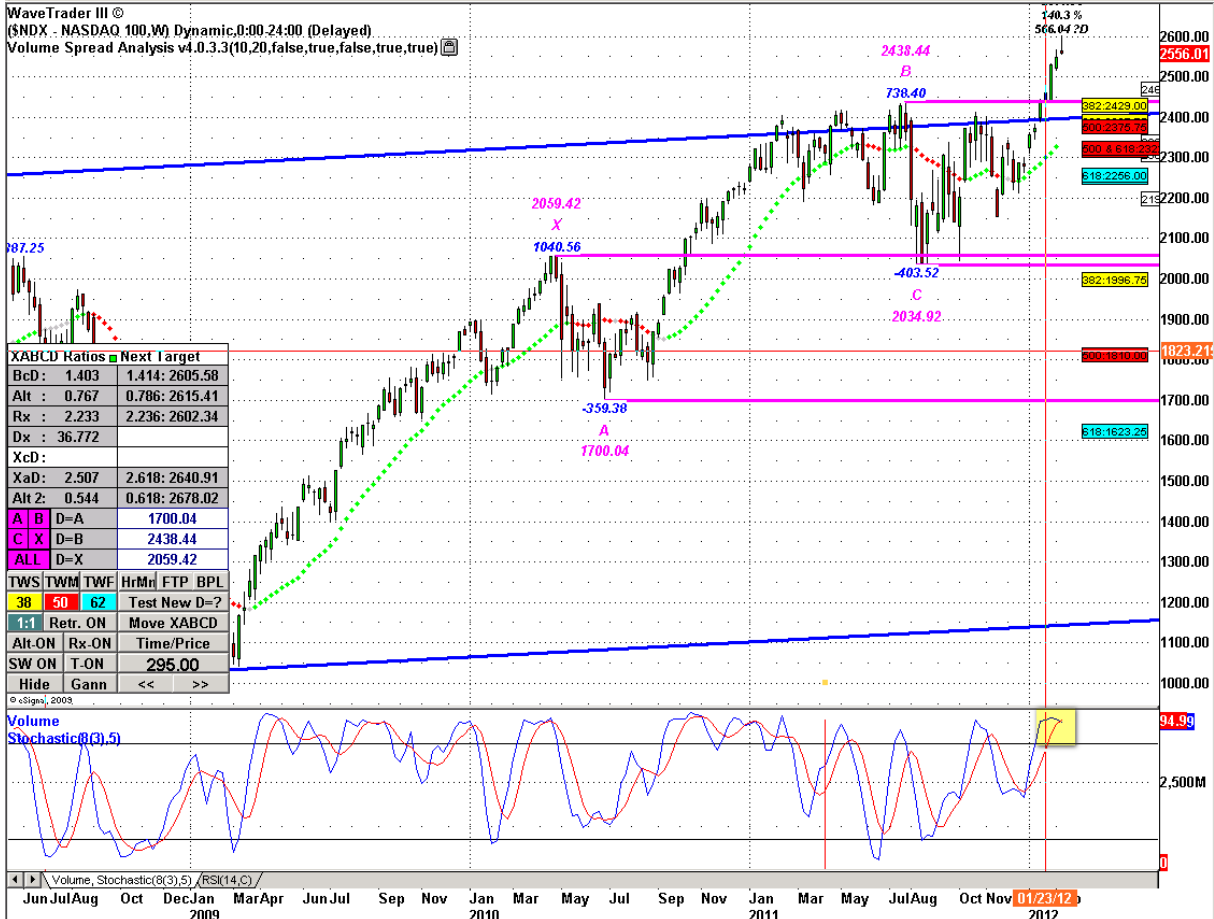
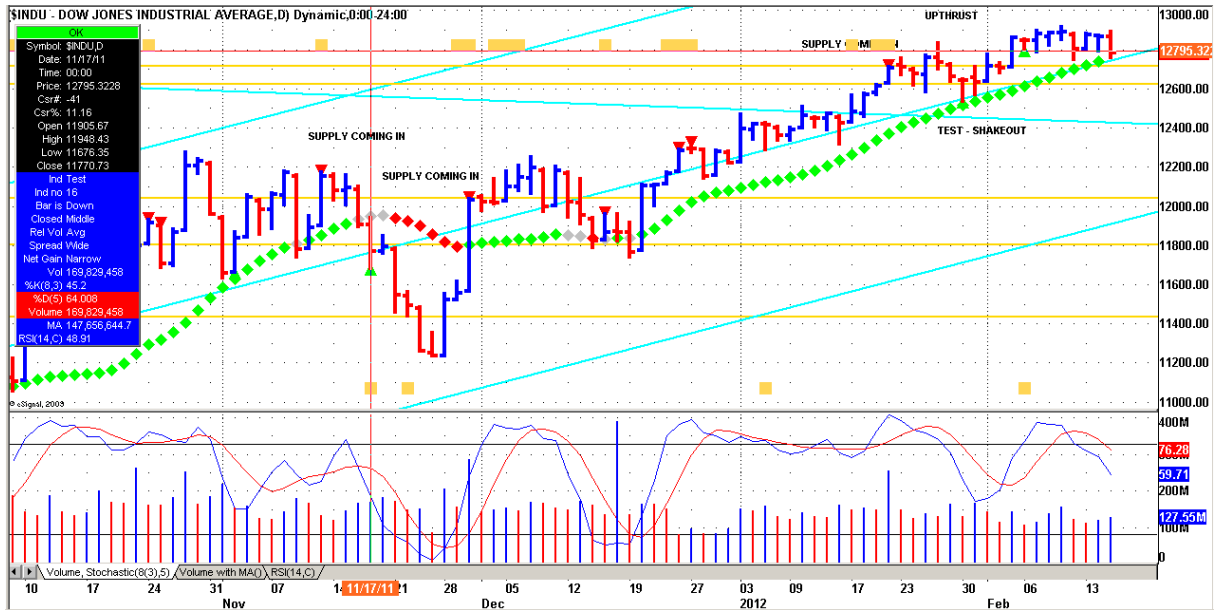
This set up shows weakness. However be cautious if volume on the down bar was very high to ultra high with the next bar up. This would confirm there was buying in the down bar although still a lot of supply.

High volume up bars closing off their highs, no demand and upthrusts would confirm the weakness.

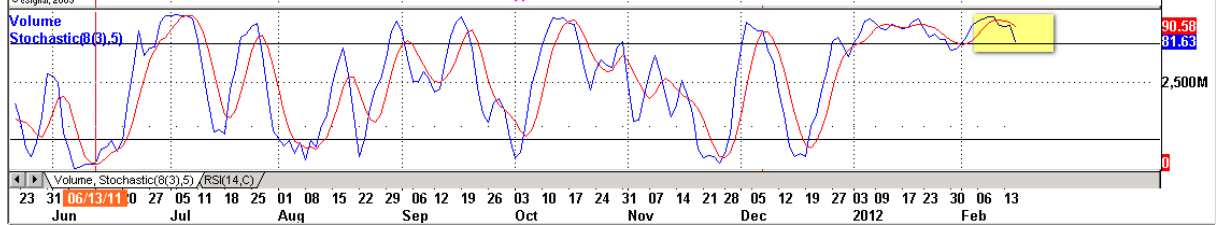
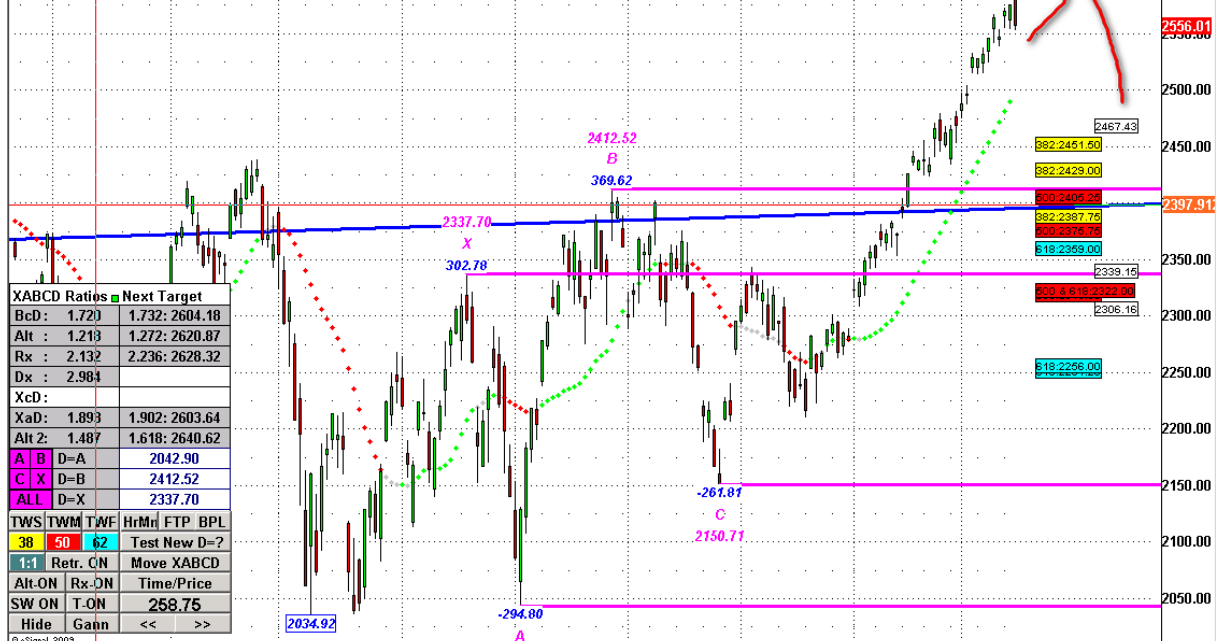
Low volume down bars show lack of selling. This would only lead to a strong rally if a cause has been built with buying in the background.



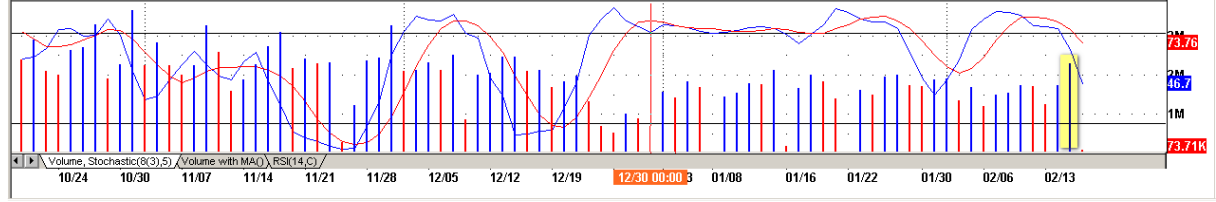
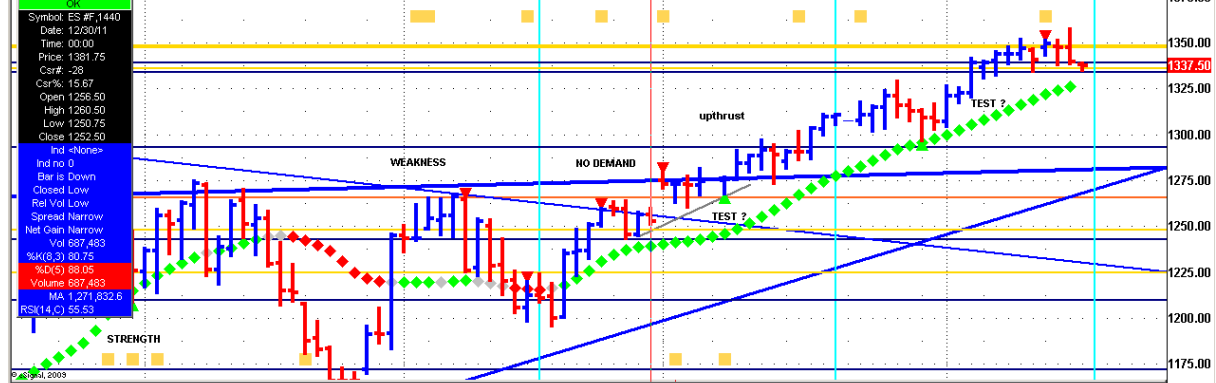


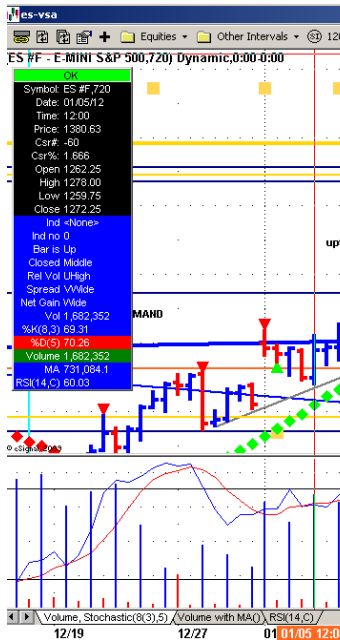


WaveTrader III ©
 (SNDX: NASDAQ 100,D) Dynamic:0:00-24:00 (Delayed)
 Volume Spread Analysis v4.0.3.3(10,20,false,true,false,true,true)



ES #F - E-MINI S&P 500(1440) Dynamic:0:00-0:00





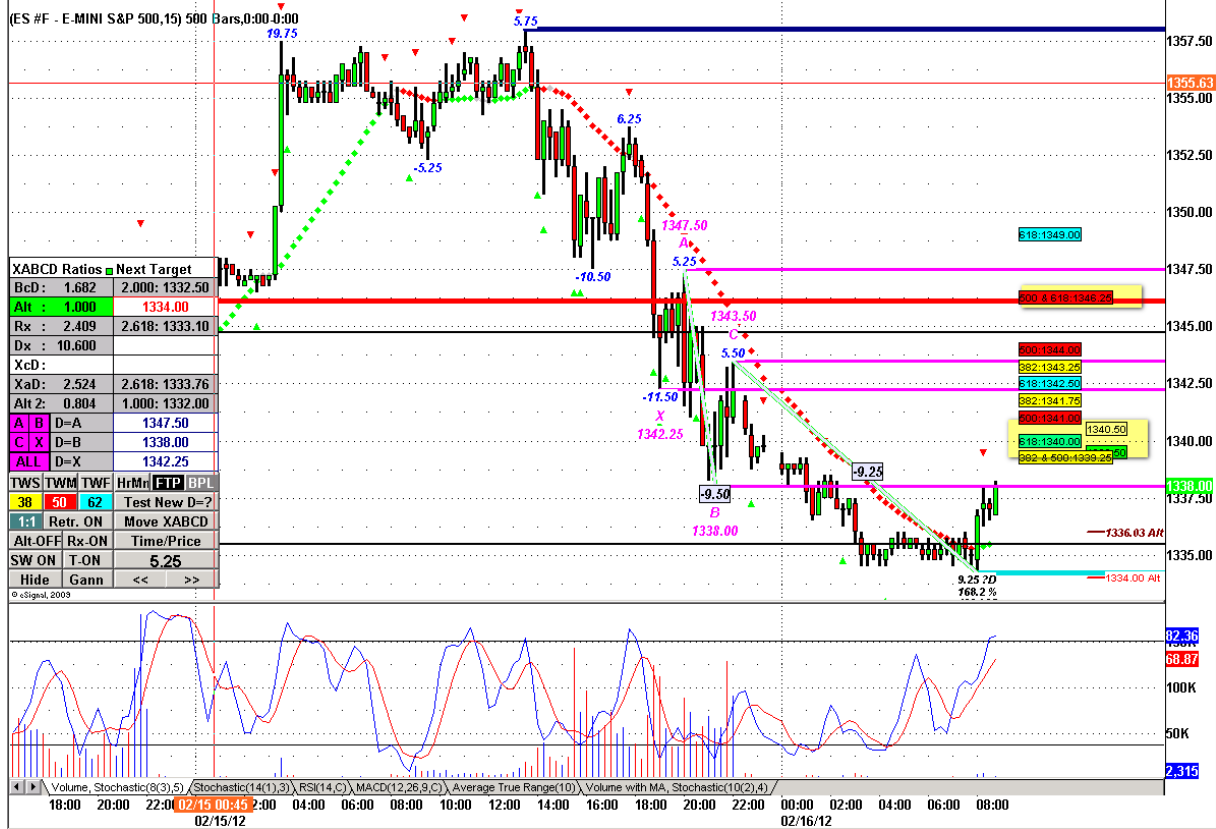
SOW 58 TRAP UPMOVE

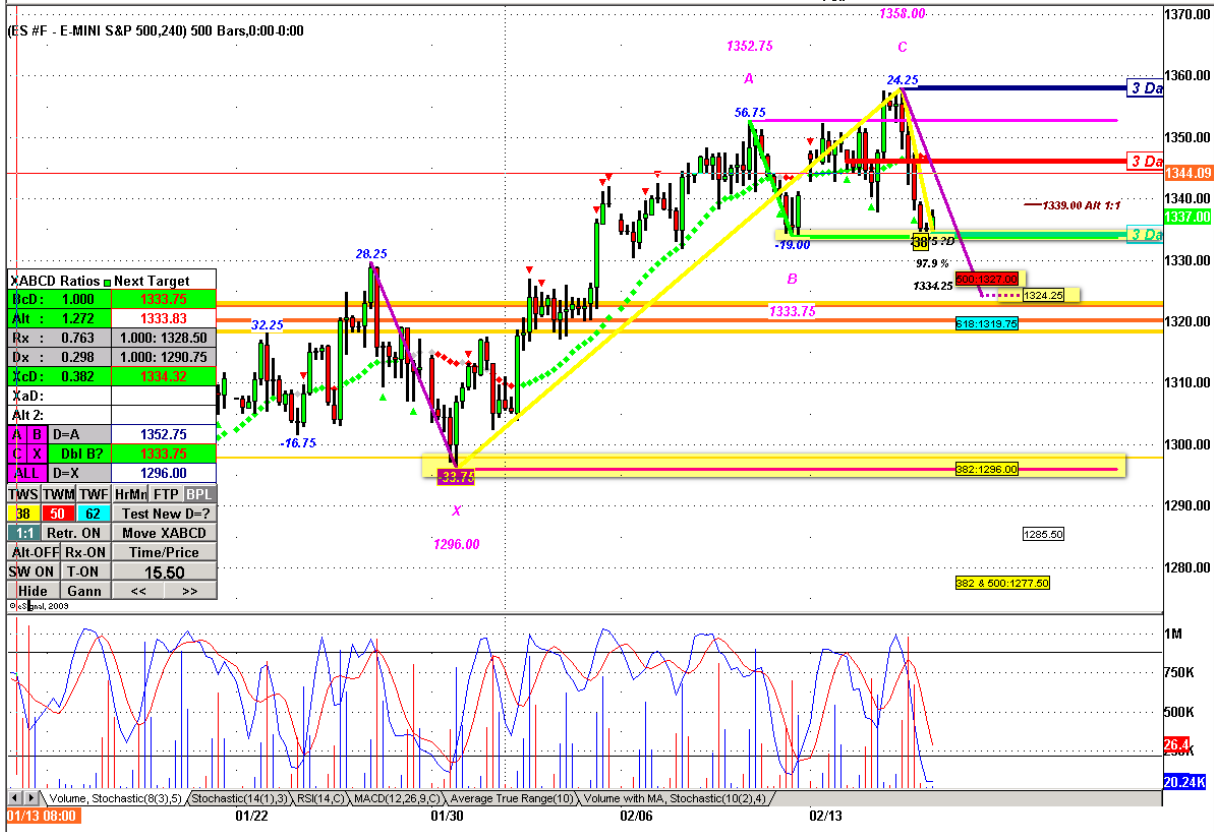
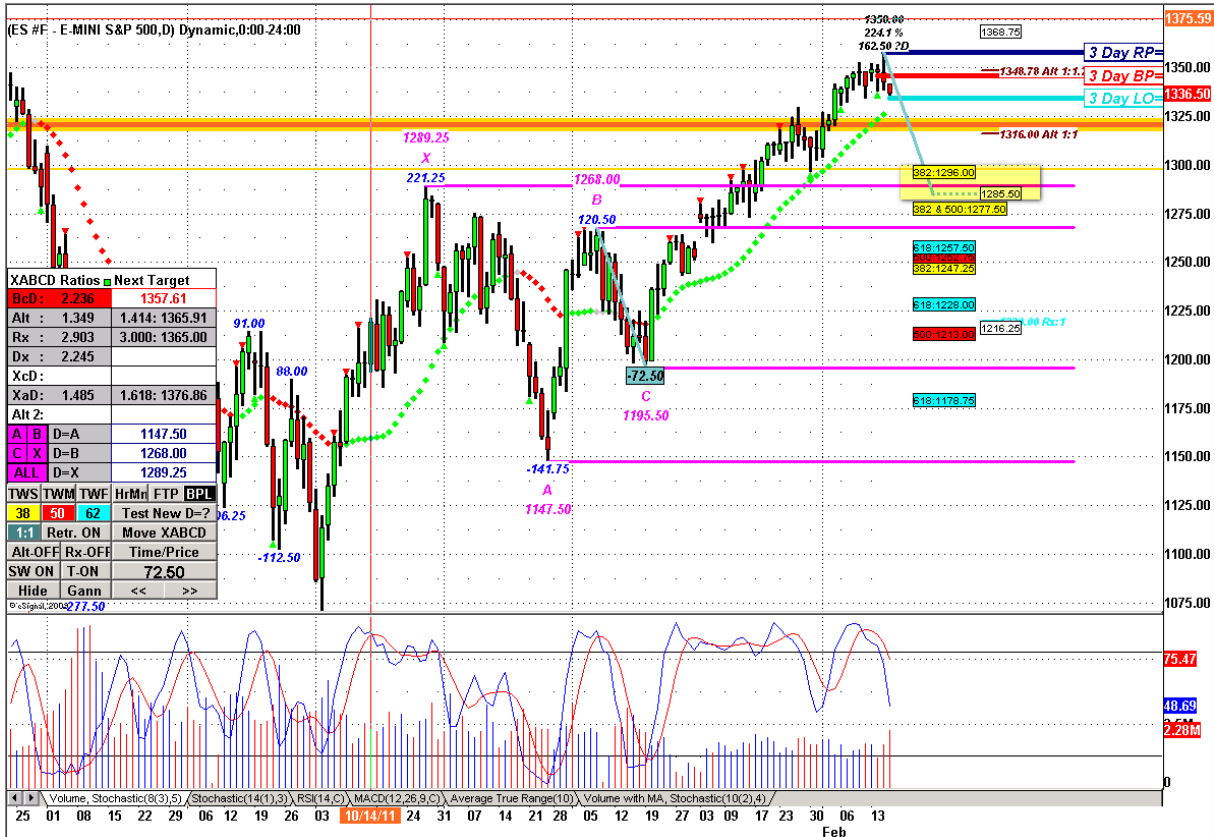
Note: This indicator is based upon the action of two bars.

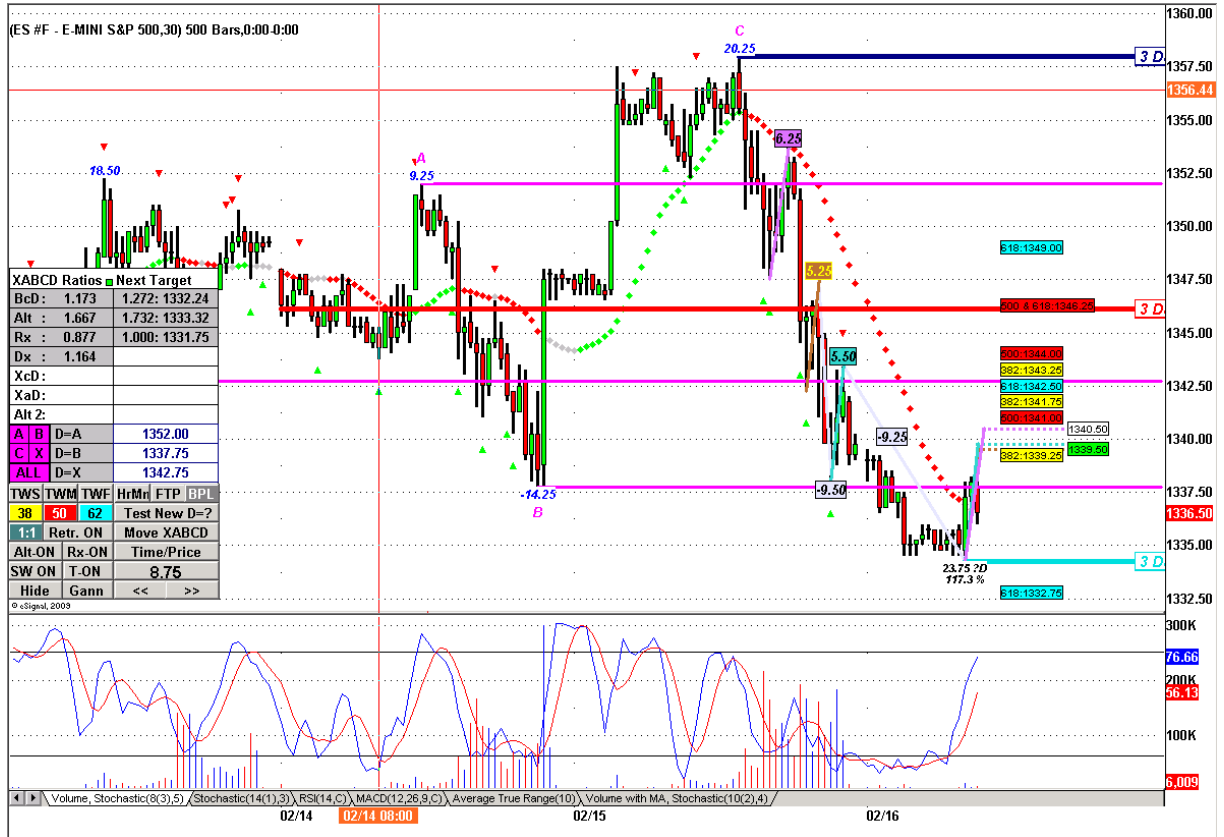
Bar Description:
The first bar is up and closing off the highs. The next bar is a wide spread down bar closing near the lows with its high higher than the first bar. This is designed to lock traders who are long into poor positions.

Background:
Pay particular attention to the background. After a period of rising prices this could be the start of distribution by one or more professional groups.
However if the market has already fallen for some time this could be the start of a shakeout especially if the news is bad.
If there are other SOW in the near background this adds to the weakness.

Future:
This set up shows weakness. However be cautious if volume on the down bar was very high to ultra high with the next bar up. This would confirm there was buying in the down bar although still a lot of supply.
High volume up bars closing off their highs, no demand and upthrusts would confirm the weakness.
Low volume down bars show lack of selling. This would only lead to a strong rally if a cause has been built with buying in the background.







1360.00
1357.50
1356.44
1355.00
1352.50
1350.00
1347.50
1345.00
1342.50
1340.00
1337.50
1336.50
1335.00
1332.50
1332.00
1332.76
300K
200K
100K
76.66
66.13
6.009